



# **geteduroam – eduroam Authentication**

User Guide

## Table of Contents

<b>What are eduroam and geteduroam? .....</b>	<b>1</b>
<b>Android.....</b>	<b>1</b>
<b>Apple Devices .....</b>	<b>4</b>
<i>iPhone and iPad.....</i>	<i>4</i>
<i>iMac and Macbook.....</i>	<i>7</i>
<b>Linux.....</b>	<b>15</b>
<b>Windows 10/11.....</b>	<b>21</b>

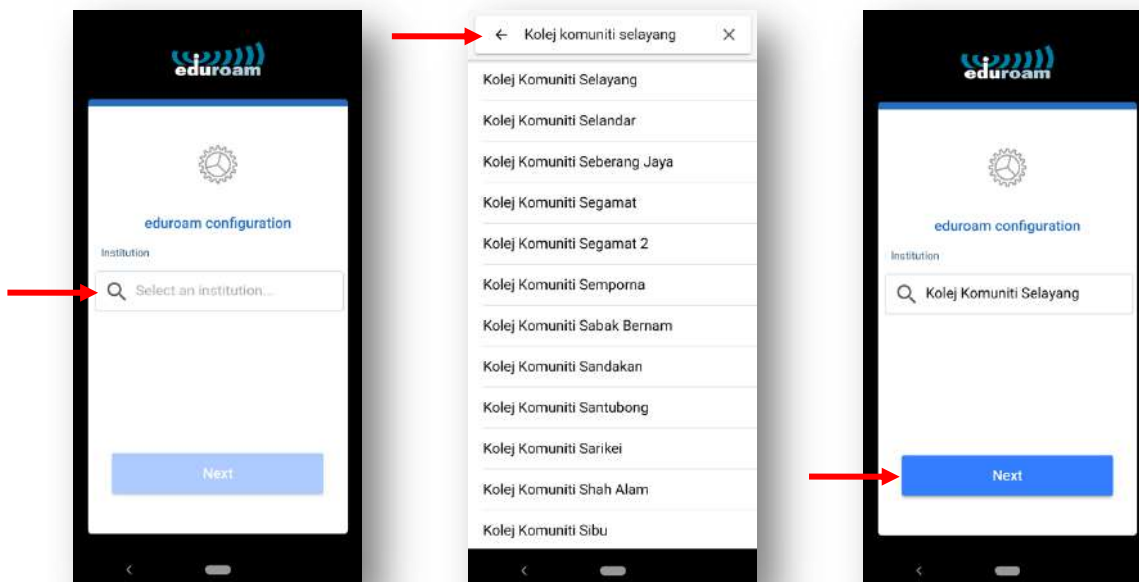
This document guides you through the steps of connecting to eduroam by using the geteduroam application.

## What are eduroam and geteduroam?

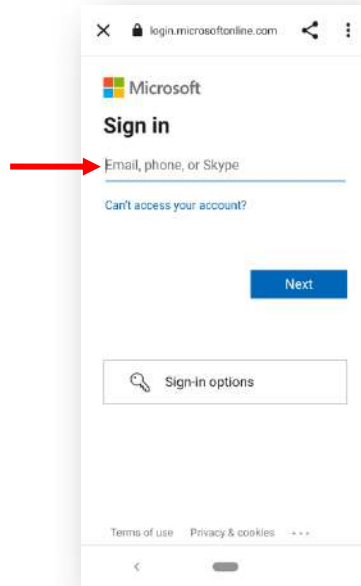
eduroam is a wifi roaming service for research and education communities that provides a secure and seamless internet access across locations and devices, whereas geteduroam is an application (app) for safe and easy eduroam setup on end users' devices. The geteduroam is available for multiple operating systems such as Android, Apple (iOS and macOS devices), Linux, and Windows. The credential generated by the geteduroam is valid for 180 days. You will need to repeat the same procedure before/when it is expired.

## Android

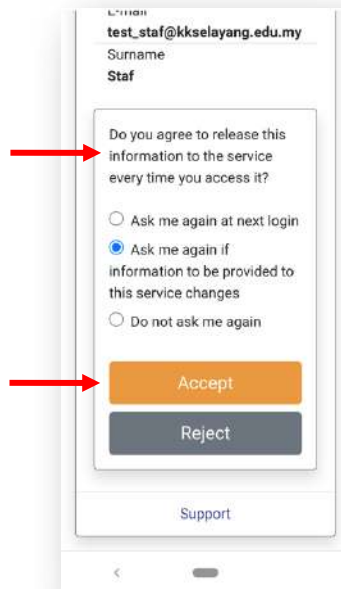
1. Download and install the geteduroam app from Google Play or Huawei AppGallery. Specifically for HONOR phone, you need to download and install the geteduroam app version **1.0.16** from the **APKPure** (<https://apkpure.com/geteduroam/app.eduroam.geteduroam/download/1.0.16>). You will need to give Chrome a temporary ability to install this app.
2. Open the geteduroam app, then search for your organisation name by entering the name and selecting from the dropdown menu. e.g. Kolej Komuniti Selayang. Then, tap the "Next" button.



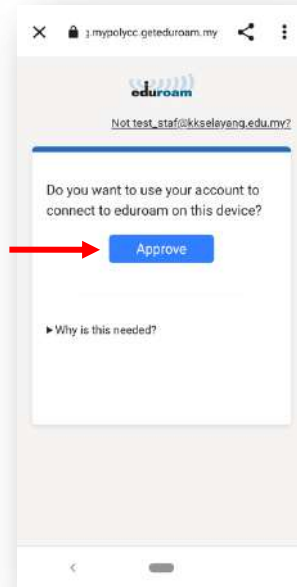
3. Sign in to your account by entering your login credentials (M365 email address and password).



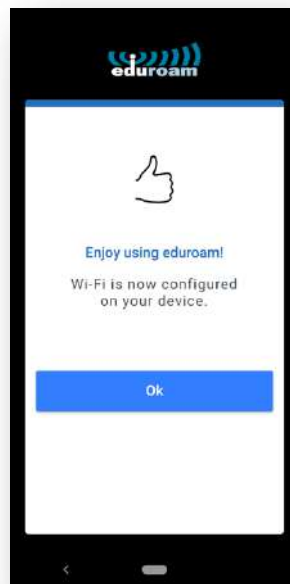
4. Select your preferred consent type and tap the “Accept” button.



5. In the geteduroam app, tap the “Approve” button to authorise the geteduroam app to use your account to connect to eduroam on your device. Tap the “Allow” button to allow geteduroam to add a Wi-Fi hotspot network in the network list. Then, tap the “Join” button to allow the geteduroam to join eduroam Wi-Fi network.



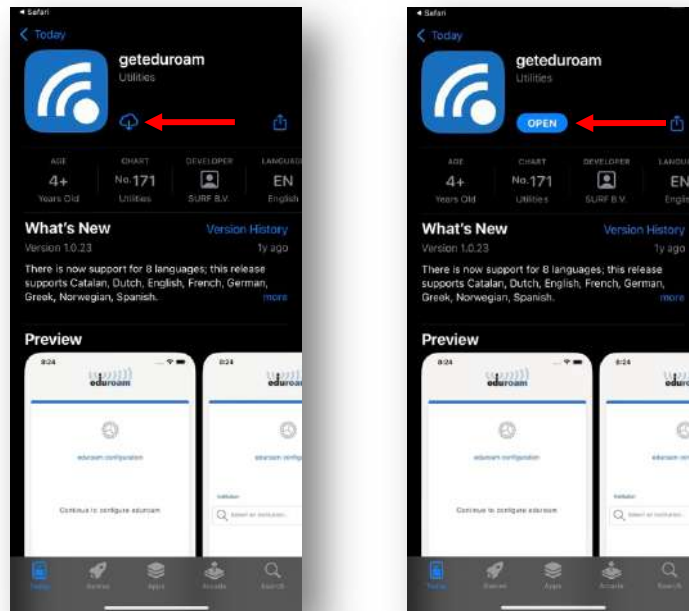
6. You will see the following page upon a successful configuration.



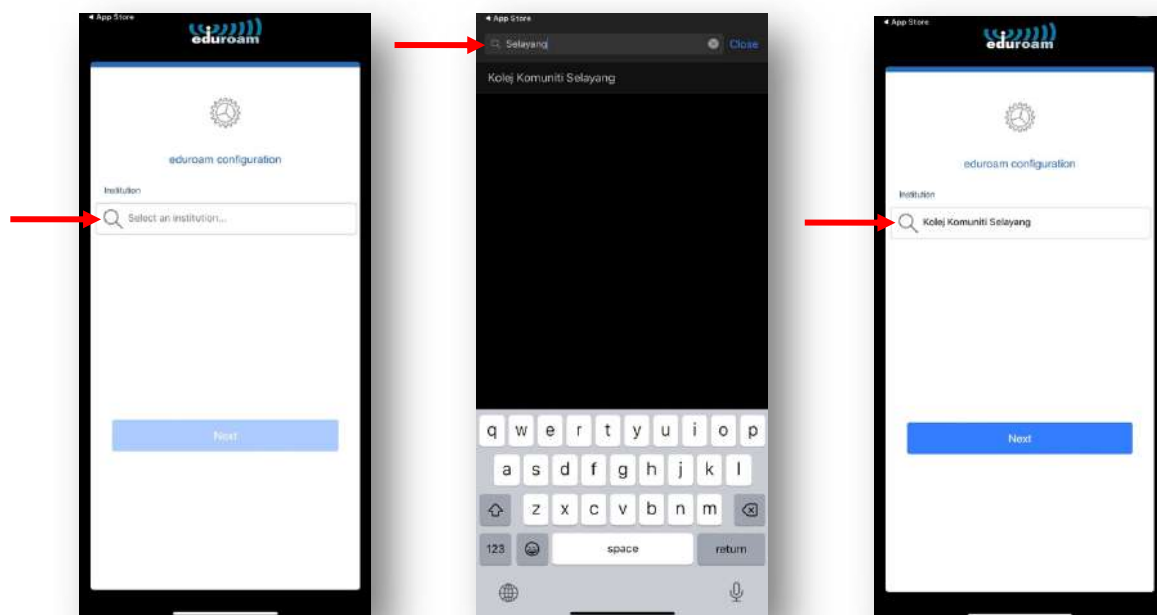
## Apple Devices

### iPhone and iPad

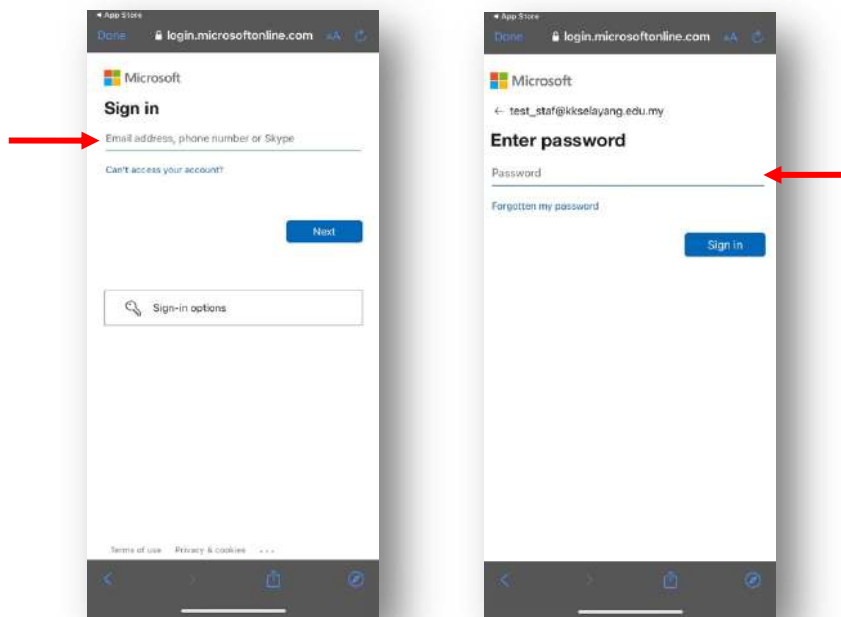
1. Download and install the geteduroam app from Apple App Store.



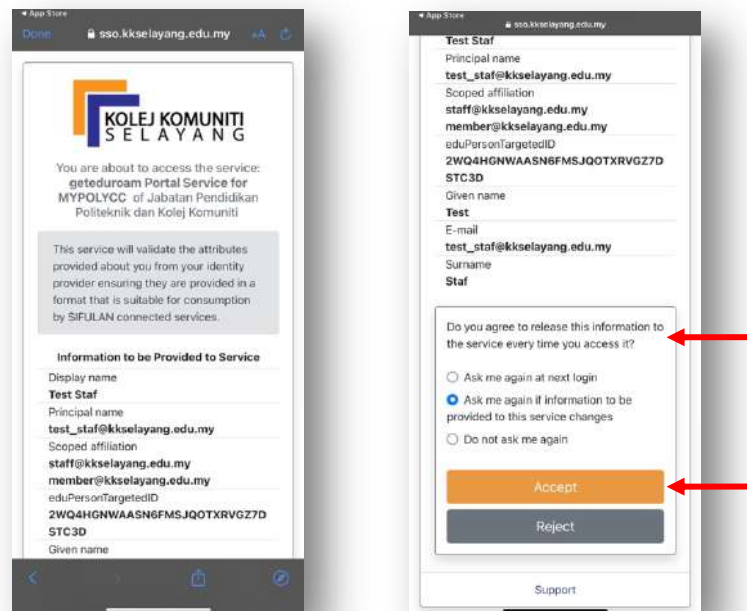
2. Open the geteduroam app, then search for your organisation name by entering the name and selecting from the dropdown menu. e.g. Kolej Komuniti Selayang. Then, tap the “Next” button.



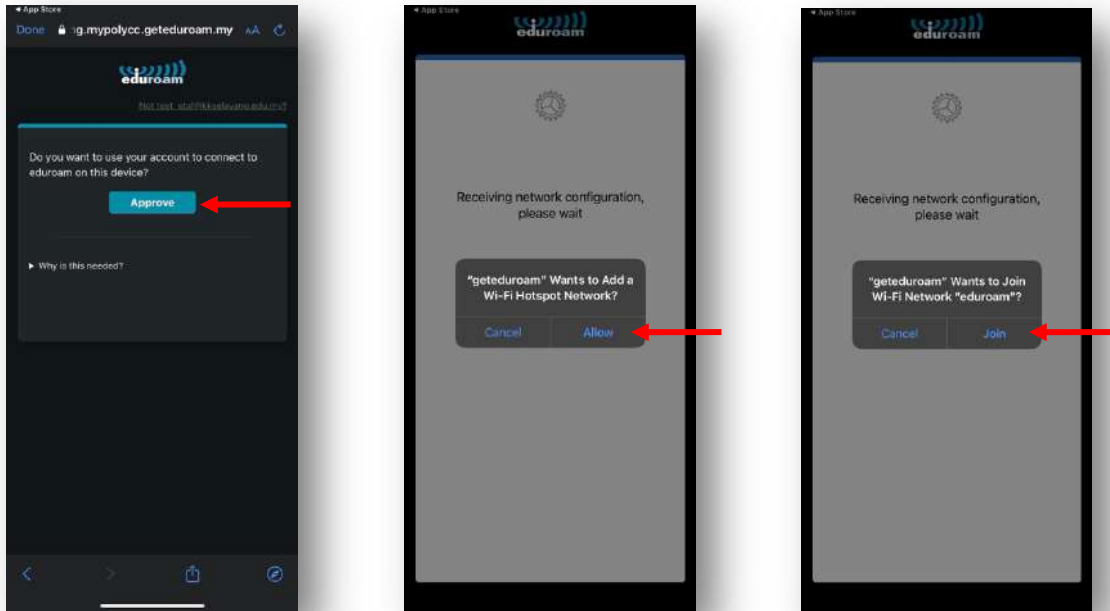
- 3. Sign in to your account by entering your login credentials (M365 email address and password).



- 4. Select your preferred consent type and tap the “Accept” button.



5. In the geteduroam app, tap the “Approve” button to authorise the geteduroam app to use your account to connect to eduroam on your device. Tap the “Allow” button to allow geteduroam to add a Wi-Fi hotspot network in the network list. Then, tap the “Join” button to allow the geteduroam to join eduroam Wi-Fi network.

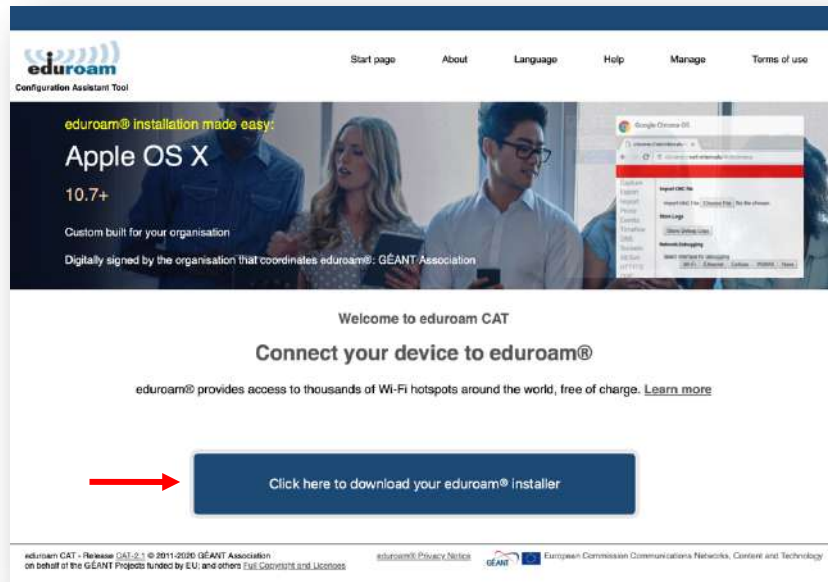


6. You will see the following page upon a successful configuration.



**iMac and Macbook**

1. Visit the eduroam CAT website (<https://cat.eduroam.org>) and click the “Click here to download your eduroam installer” button.



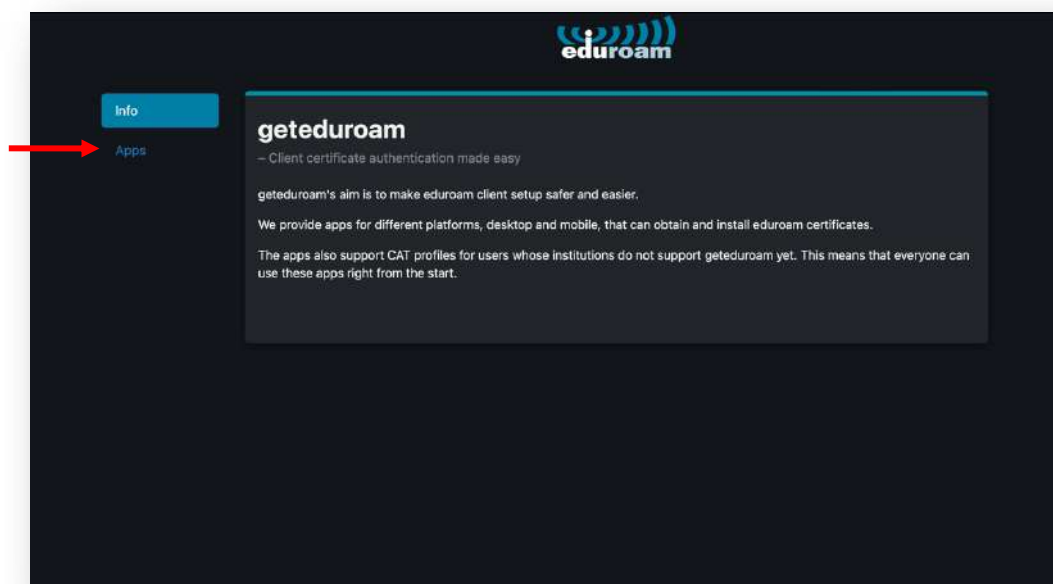
2. Select or type to search for your organisation name by entering the name and selecting from the dropdown menu. e.g. Kolej Komuniti Selayang.



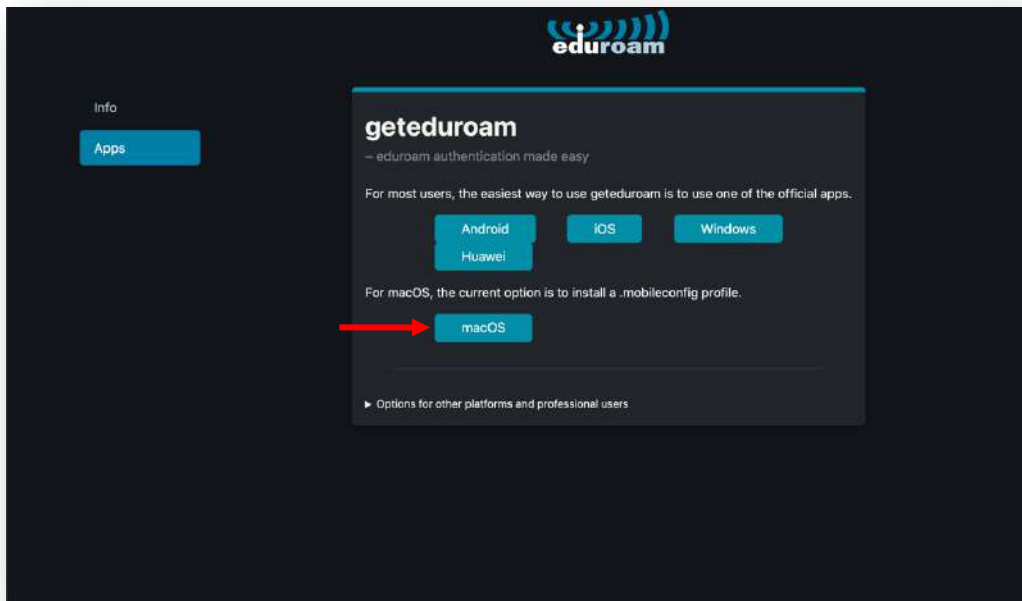
3. Click the “Continue” button to continue. You will be redirected to the geteduroam portal for your organisation.



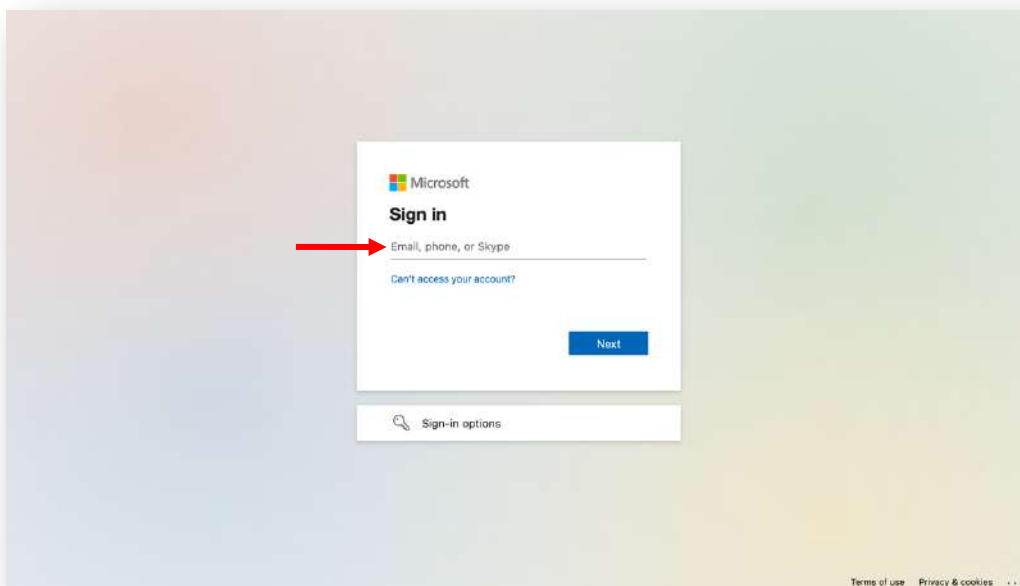
4. Click the “Apps” menu at the left side.

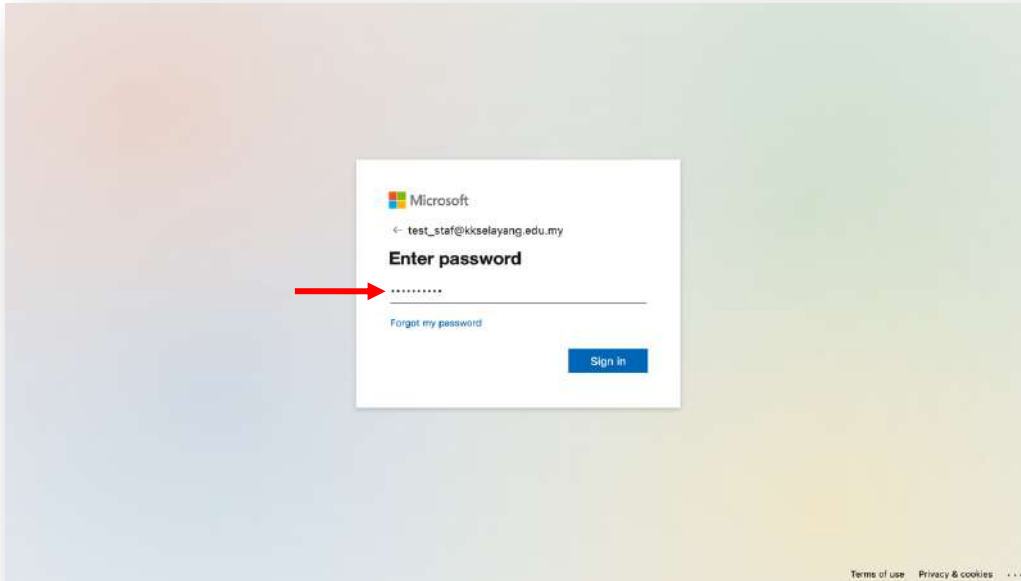


5. Click the “macOS” button.

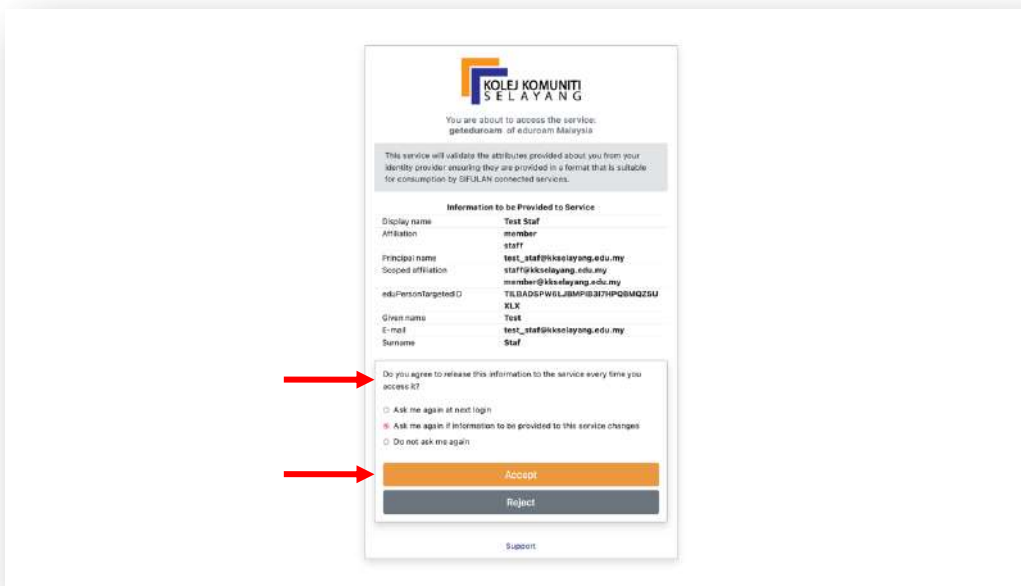


6. Sign in to your account by entering your login credentials (M365 email address and password).

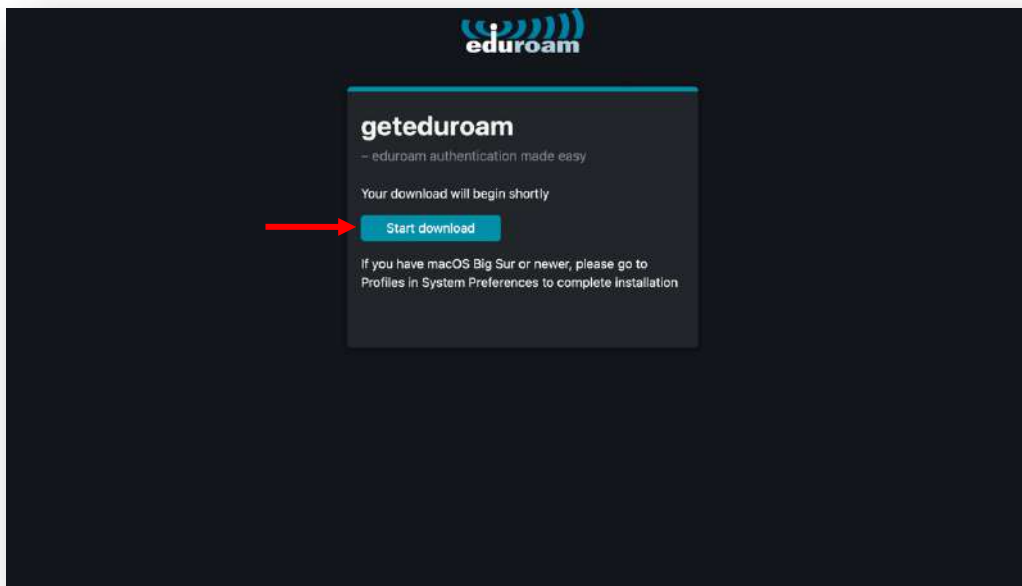




7. Select your preferred consent type and click the “Accept” button.



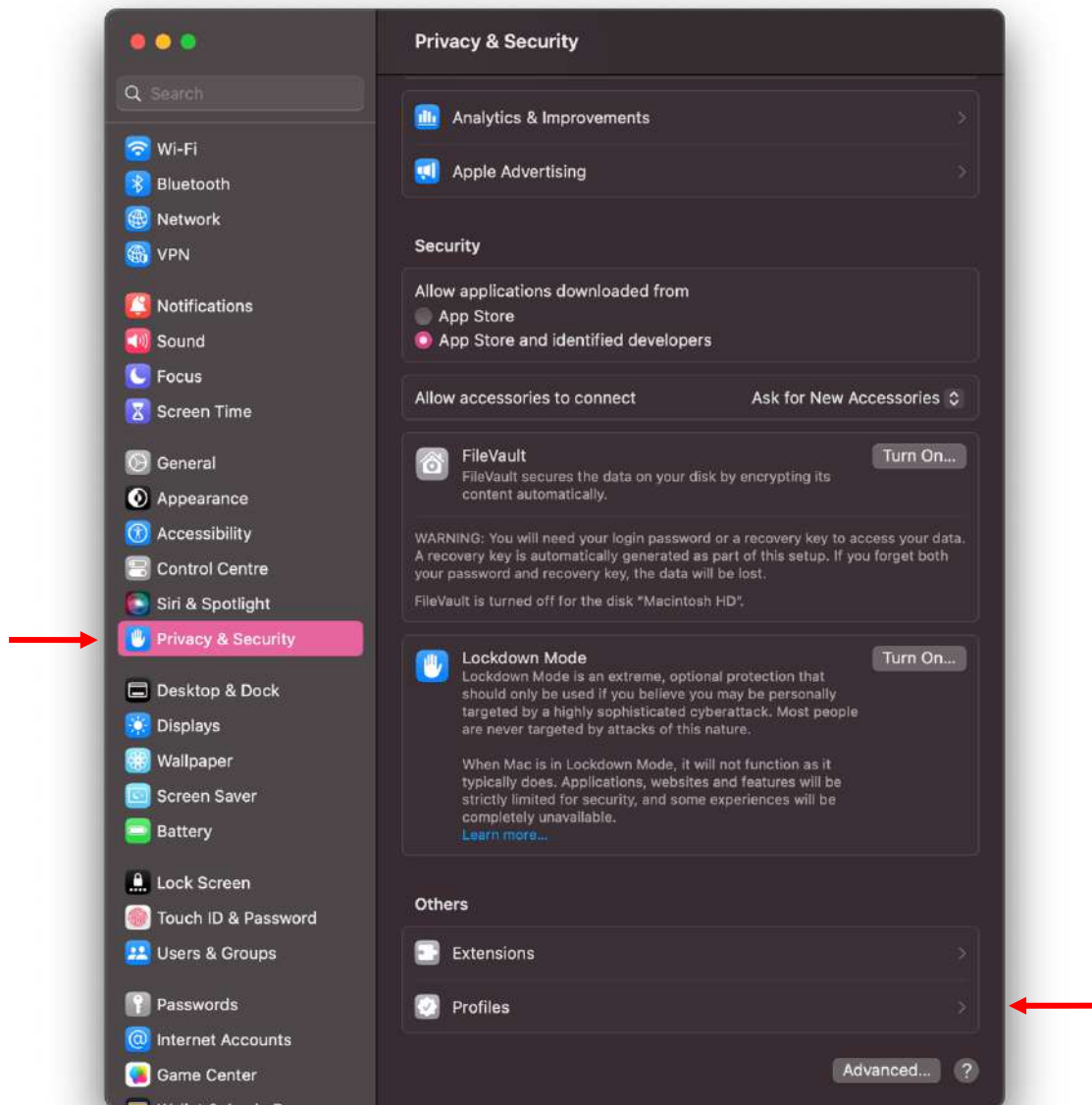
8. You will be asked to save the generated “.mobileconfig” file. If you miss it, you can click the “Start download” button to download the generated “.mobileconfig” file.



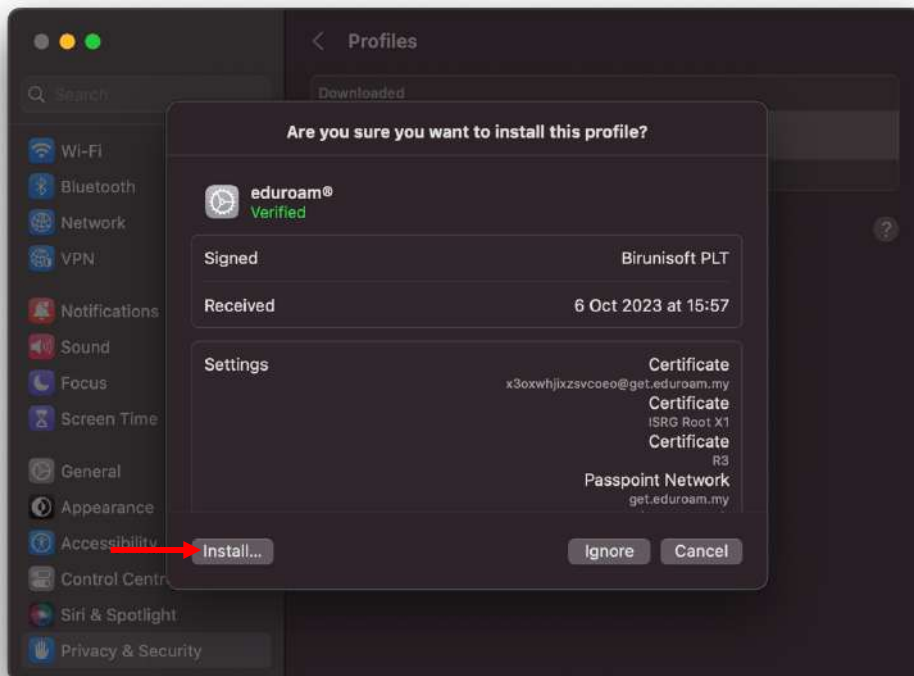
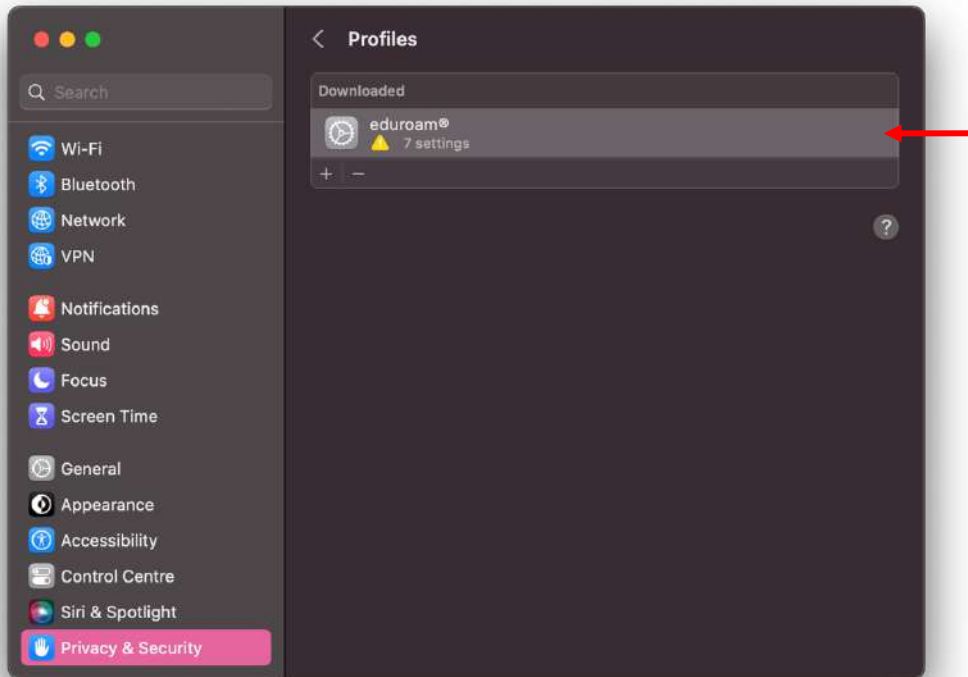
9. Double click the downloaded “.mobileconfig” file. A profile installation message will pop-up on your screen, asking you to review and install the profile.

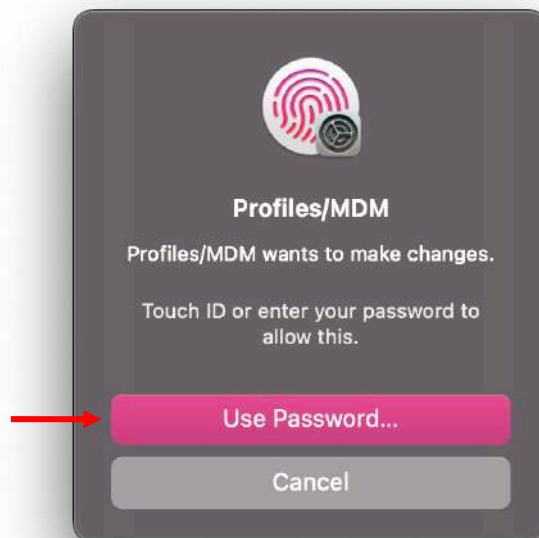
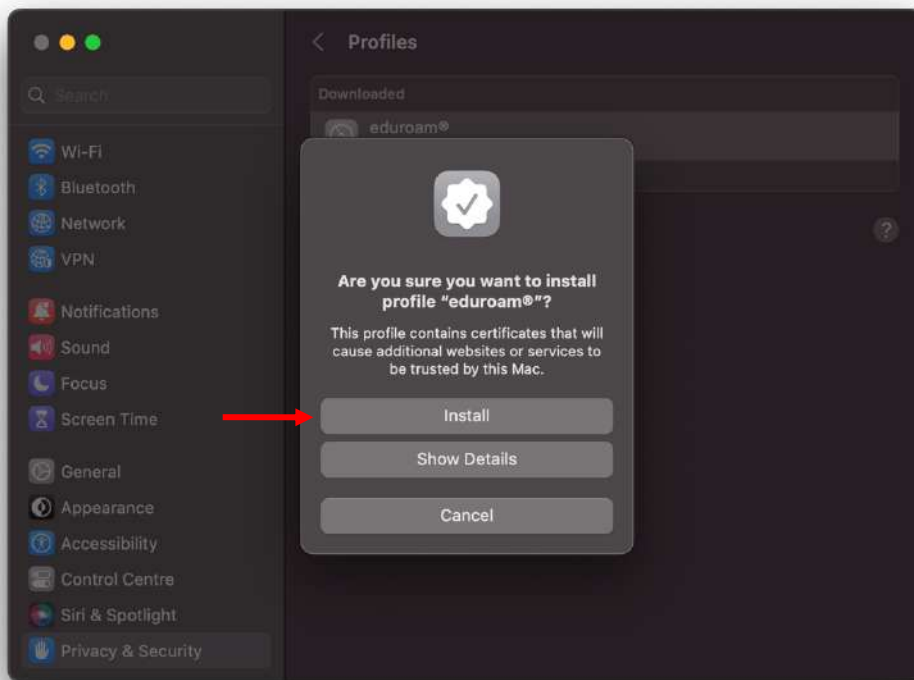


10. Go to “System Settings” -> “Privacy & Security” -> “Others” -> “Profiles”.



11. Double click the “eduroam” profile and click the “install...” button.

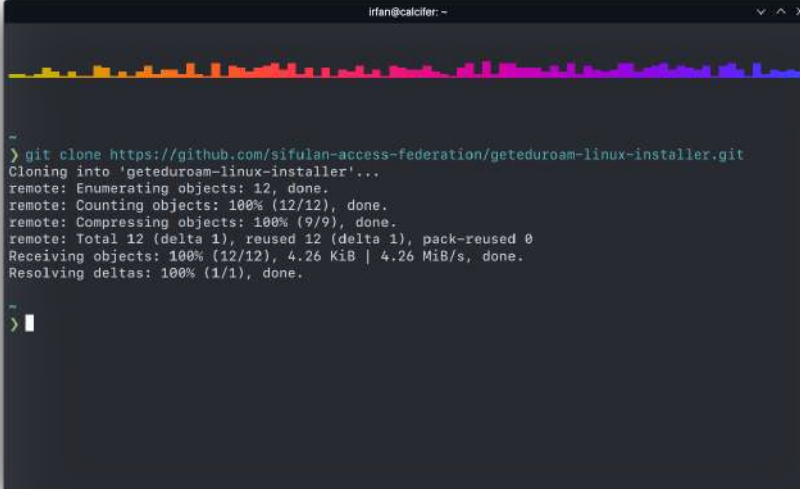




12. Once the profile is successfully imported, you should be able to connect to the eduroam Wi-Fi network.

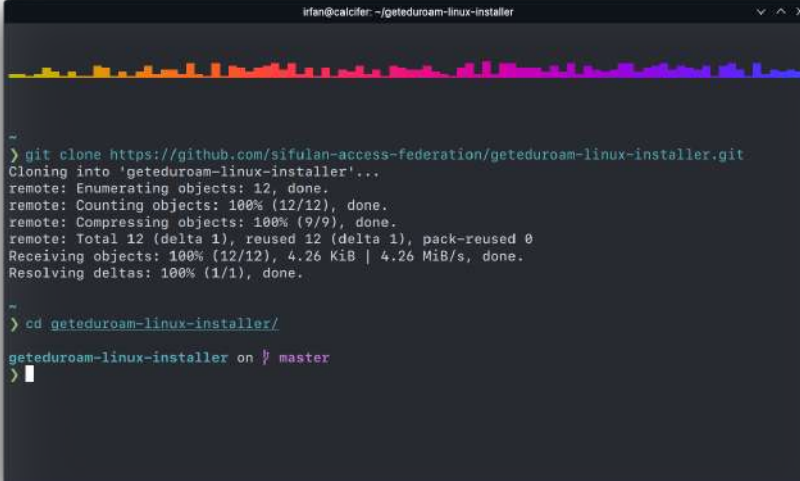
## Linux

1. Open the Terminal app, after that enter the following command: “`git clone https://github.com/sifulan-access-federation/geteduroam-linux-installer.git`”, to download the geteduroam Linux installer.



```
ifan@calcifer: ~  
┌───  
└─> git clone https://github.com/sifulan-access-federation/geteduroam-linux-installer.git  
Cloning into 'geteduroam-linux-installer'...  
remote: Enumerating objects: 12, done.  
remote: Counting objects: 100% (12/12), done.  
remote: Compressing objects: 100% (9/9), done.  
remote: Total 12 (delta 1), reused 12 (delta 1), pack-reused 0  
Receiving objects: 100% (12/12), 4.26 KiB | 4.26 MiB/s, done.  
Resolving deltas: 100% (1/1), done.  
└─> |
```

2. After the download is finished, enter the directory of the installer using the following command: “`cd geteduroam-linux-installer`”.



```
ifan@calcifer: ~/geteduroam-linux-installer  
┌───  
└─> git clone https://github.com/sifulan-access-federation/geteduroam-linux-installer.git  
Cloning into 'geteduroam-linux-installer'...  
remote: Enumerating objects: 12, done.  
remote: Counting objects: 100% (12/12), done.  
remote: Compressing objects: 100% (9/9), done.  
remote: Total 12 (delta 1), reused 12 (delta 1), pack-reused 0  
Receiving objects: 100% (12/12), 4.26 KiB | 4.26 MiB/s, done.  
Resolving deltas: 100% (1/1), done.  
└─> cd geteduroam-linux-installer/  
geteduroam-linux-installer on master  
└─> |
```

- Run the installer by using the following command: “./install.sh”. You may be prompted to enter your **sudo** password in the process. This step is only required for the initial installation.

```

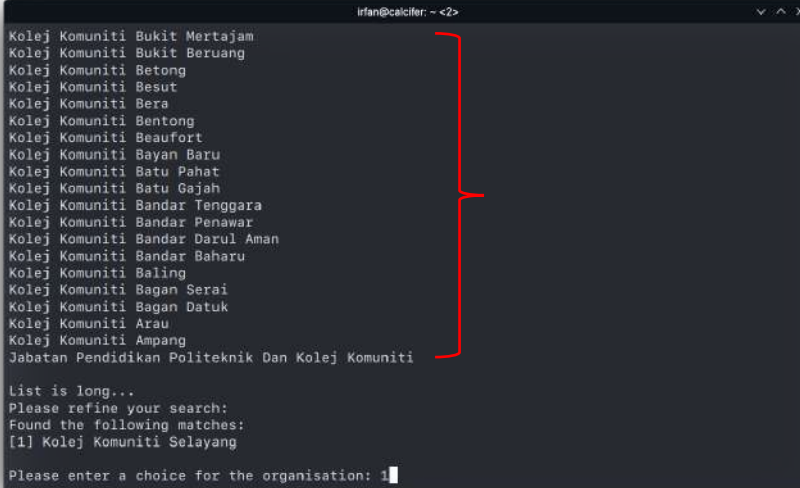
irfan@calcifer: ~/geteduroam-linux-installer
~
> git clone https://github.com/sifulan-access-federation/geteduroam-linux-installer.git
Cloning into 'geteduroam-linux-installer'...
remote: Enumerating objects: 12, done.
remote: Counting objects: 100% (12/12), done.
remote: Compressing objects: 100% (9/9), done.
remote: Total 12 (delta 1), reused 12 (delta 1), pack-reused 0
Receiving objects: 100% (12/12), 4.26 KiB | 4.26 MiB/s, done.
Resolving deltas: 100% (1/1), done.
~
> cd geteduroam-linux-installer/
geteduroam-linux-installer on  master
> ./install.sh
Installing geteduroam to /usr/local/bin
[sudo] password for irfan:
geteduroam-linux-installer on  master took 5s
>
  
```

- Once it’s finished installing, you can run the application from anywhere inside the Terminal using the command, “geteduroam-cli”. When prompted to enter your organisation, type and enter the name of your organisation (e.g. “kolej komuniti selayang”).

```

irfan@calcifer: ~ <2>
~
> geteduroam-cli
Please enter your organization (e.g. SURF): kolej komuniti selayang
  
```

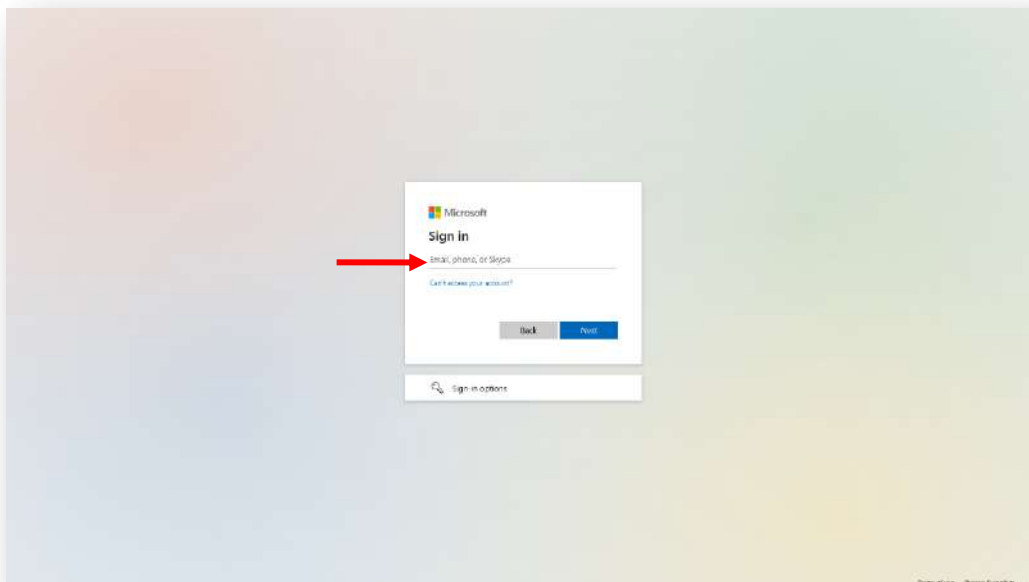
5. If there are many results found from your search for your organisation, you will need to be more precise with the organisation name you provide so that it is able to find a smaller number of matches. Once it finds a smaller number of matches, it will present you with a list of institution(s) each with their own corresponding numbers. When prompted to enter a choice for the organisation, confirm your selection by entering the number assigned to your organisation.



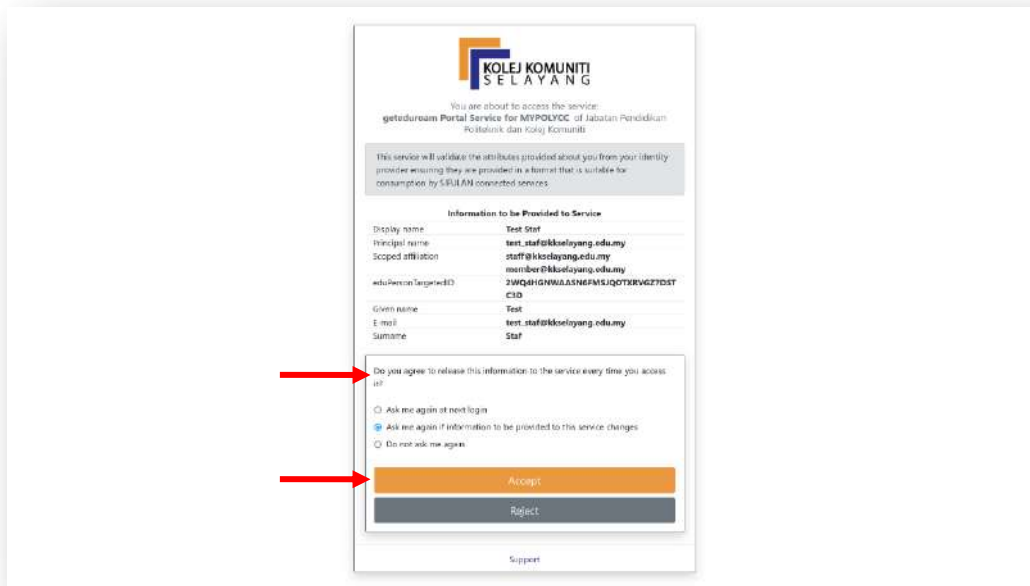
```
irfan@calicifer: ~ <2>
Kolej Komuniti Bukit Mertajam
Kolej Komuniti Bukit Beruang
Kolej Komuniti Betong
Kolej Komuniti Besut
Kolej Komuniti Bera
Kolej Komuniti Bentong
Kolej Komuniti Beaufort
Kolej Komuniti Bayan Baru
Kolej Komuniti Batu Pahat
Kolej Komuniti Batu Gajah
Kolej Komuniti Bandar Tenggara
Kolej Komuniti Bandar Penawar
Kolej Komuniti Bandar Darul Aman
Kolej Komuniti Bandar Baharu
Kolej Komuniti Baling
Kolej Komuniti Bagan Serai
Kolej Komuniti Bagan Datuk
Kolej Komuniti Arau
Kolej Komuniti Ampang
Jabatan Pendidikan Politeknik Dan Kolej Komuniti

List is long..
Please refine your search:
Found the following matches:
[1] Kolej Komuniti Selayang
Please enter a choice for the organisation: 1
```

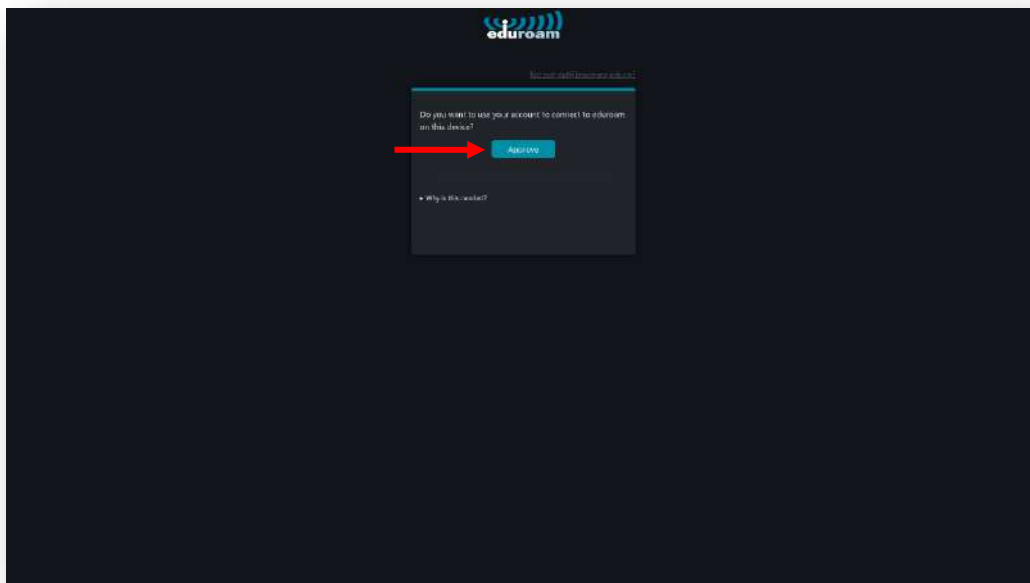
6. The geteduroam app will open the default web browser and ask you to perform authentication. Enter your organisation credentials (M365 email address and password) and proceed to login accordingly.



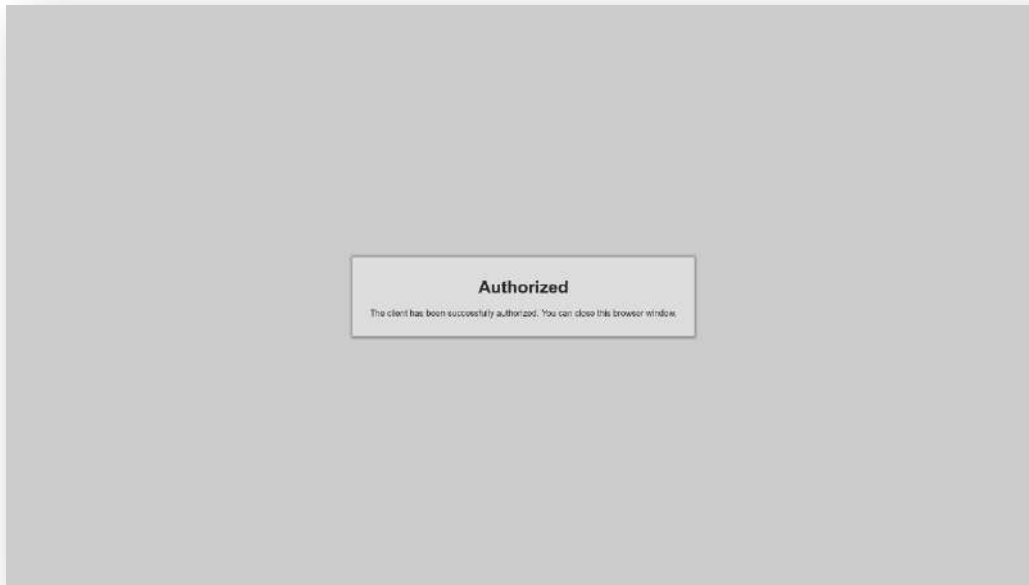
7. Select your preferred consent type and click the “Accept” button.



8. Click the “Approve” button to authorise the geteduroam app to use your account to connect to eduroam on your device.



9. You should see a page saying that the client has been successfully authorised at the end. You may close the web browser window.



10. Go back to the Terminal, and you should see that a new eduroam connection has been added to NetworkManager on your system and how long the connection is valid for.

```

Ifan@calicifer: ~ <2>
Kolej Komuniti Bandar Darul Aman
Kolej Komuniti Bandar Baharu
Kolej Komuniti Baling
Kolej Komuniti Bagan Serai
Kolej Komuniti Bagan Datuk
Kolej Komuniti Arau
Kolej Komuniti Ampang
Jabatan Pendidikan Politeknik Dan Kolej Komuniti

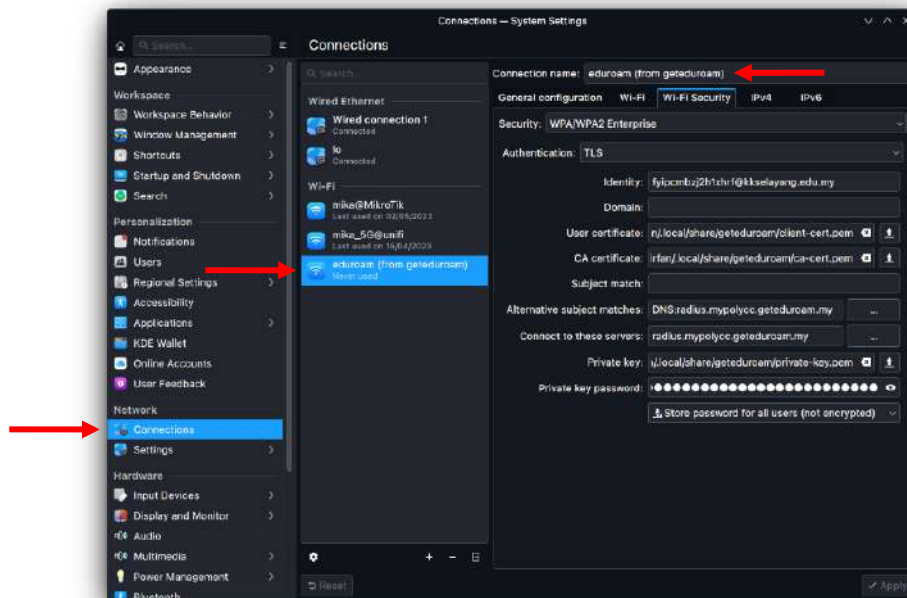
List is long...
Please refine your search:
Found the following matches:
[1] Kolej Komuniti Selayang

Please enter a choice for the organisation: 1
Your browser has been opened to authorize the client
Or copy and paste the following url: https://kkselayang.mypolycc.geteduroam.my/oauth/authorize
/?client_id=app.geteduroam.sh&code_challenge=0xY0q1RnVNHwd9F58L3Zrm1g3cL70kNh8VDWmVx0k9E&code_
challenge_method=S256&redirect_uri=http%3A%2F%2F127.0.0.1%3A35219%2F&response_type=code&scope=
eap-metadata&state=m2GeSgWylpmqimHruMXAPM_h5iiZq0b4KZwjp_u6N5Y

Your eduroam connection has been added to NetworkManager with the name: "eduroam (from getedur
oam)"
Your connection is valid for: 180 days

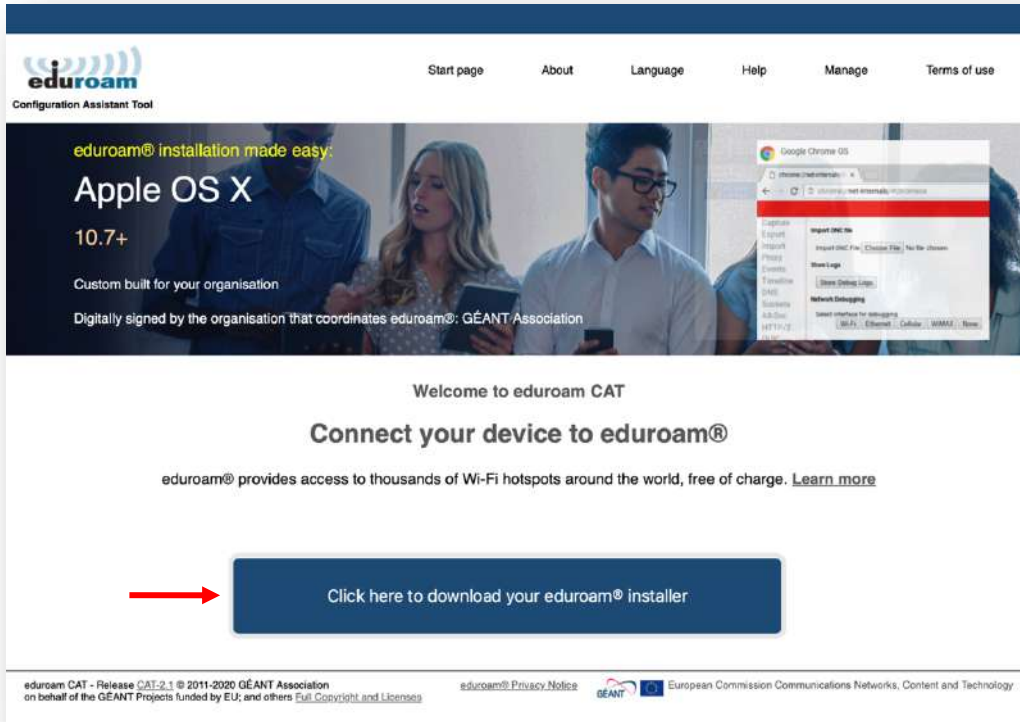
~ took 1m14s
>
    
```

11. You can also verify and connect to the new eduroam connection by locating it in your NetworkManager.



**Windows 10/11**

1. Visit the eduroam CAT website (<https://cat.eduroam.org>) and click the “Click here to download your eduroam installer” button.



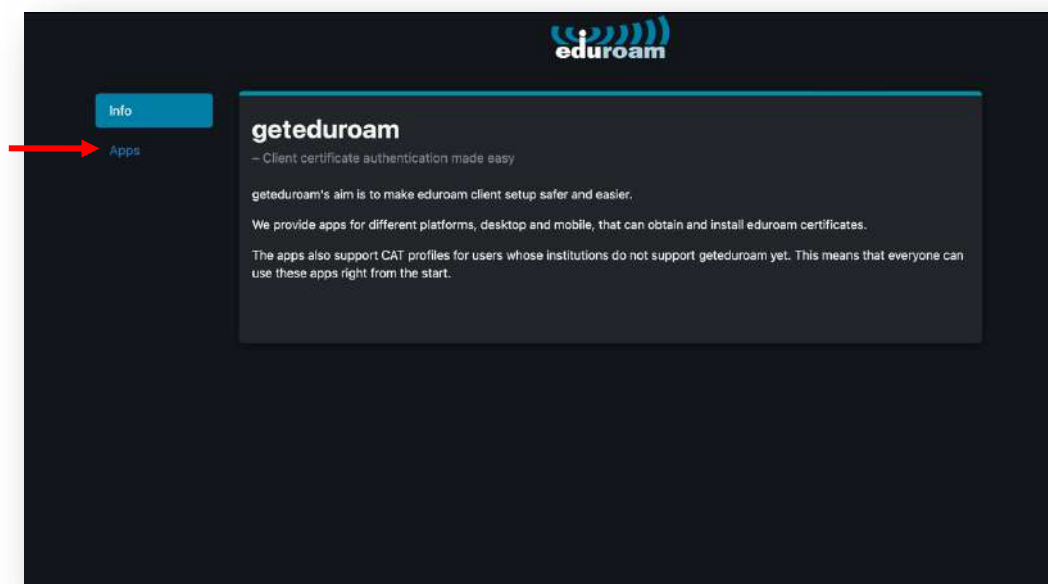
2. Select or type to search for your organisation name by entering the name and selecting from the dropdown menu. e.g. Kolej Komuniti Selayang.



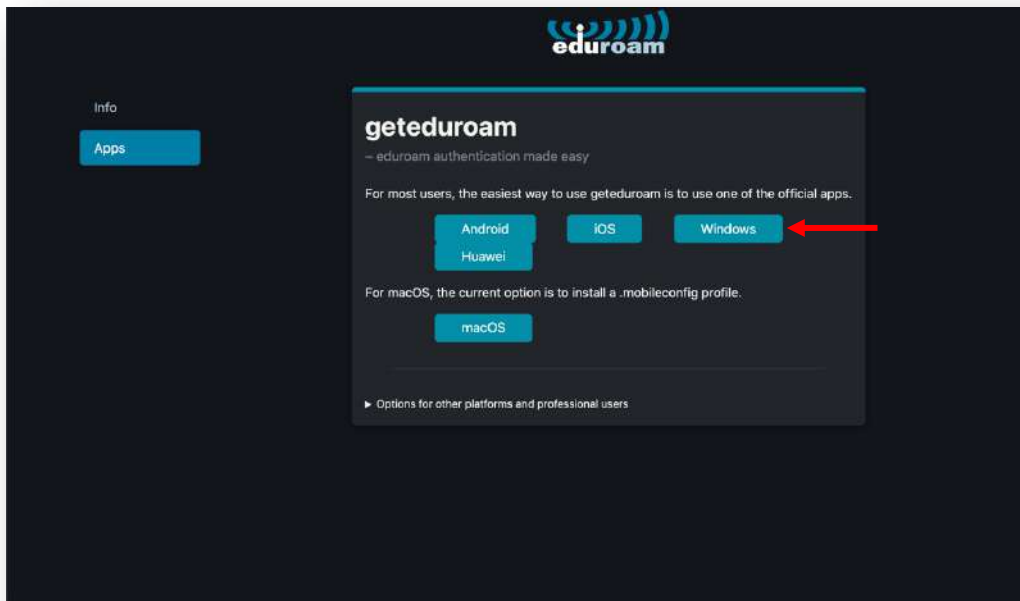
3. Click the “Continue” button to continue. You will be redirected to the geteduroam portal for your organisation.



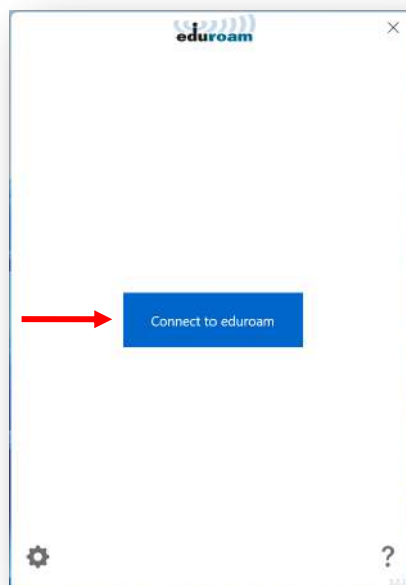
4. Click the “Apps” menu at the left side.



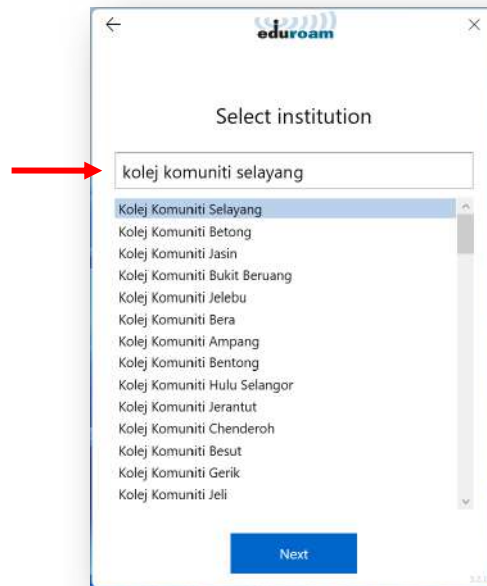
5. Click the “Windows” button.



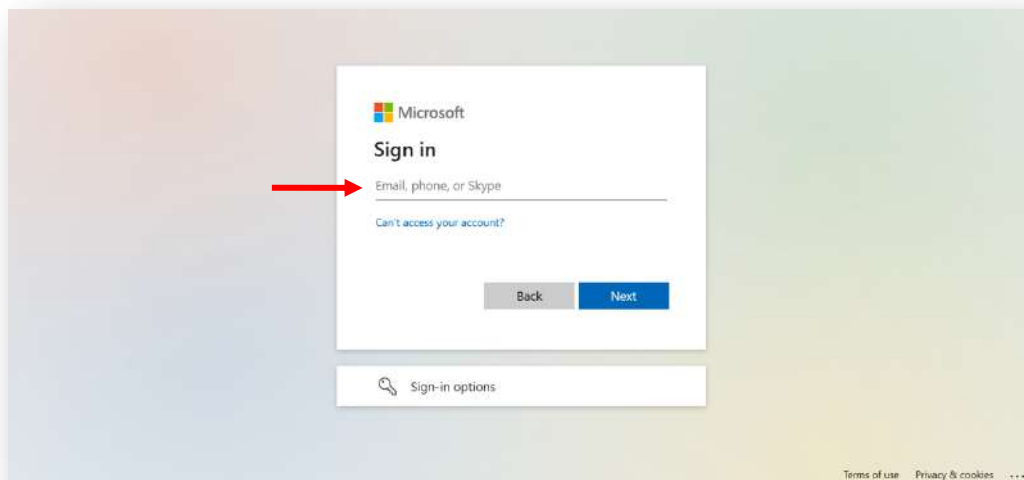
6. Save the “geteduroam” app for Windows in your local storage and open it.
7. Click the “Connect to eduroam” button.



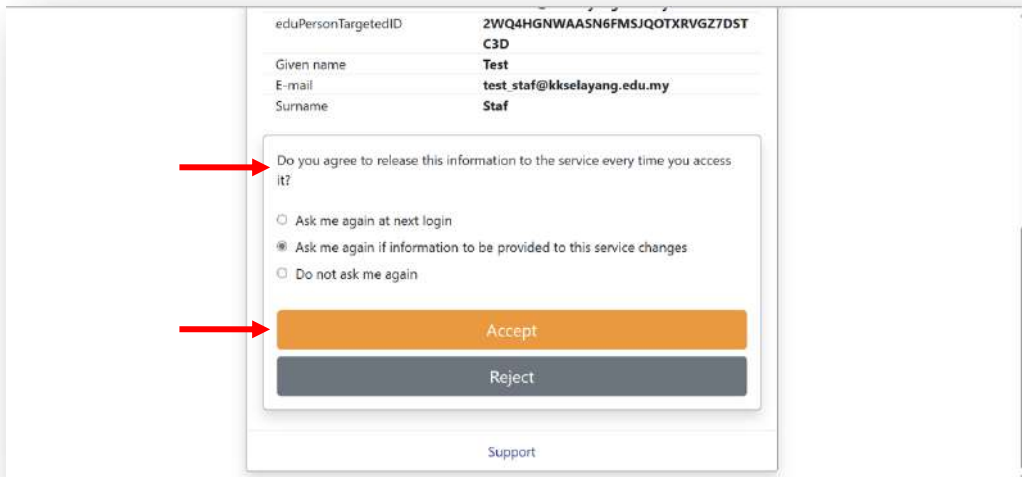
8. Search for your organisation name by entering the name and selecting from the dropdown menu. e.g. Kolej Komuniti Selayang. Then, click the “Next” button.



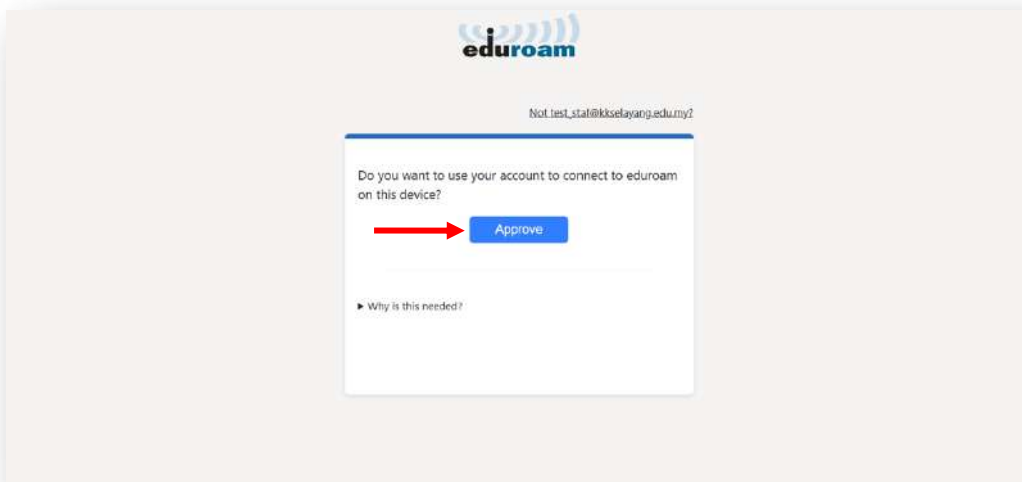
9. Sign in to your account by entering your login credentials (M365 email address and password).



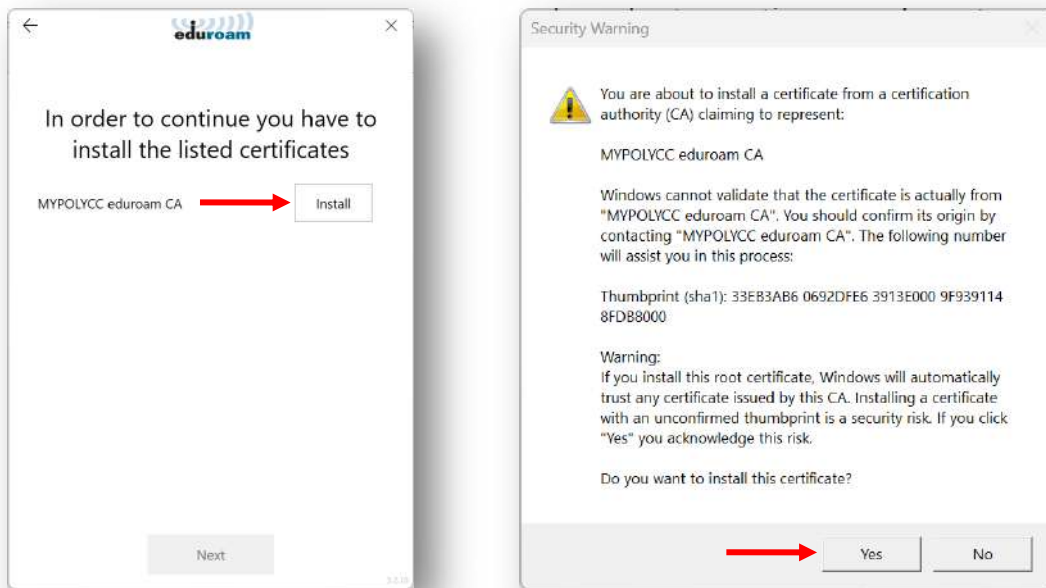
10. Select your preferred consent type and click “Accept”.



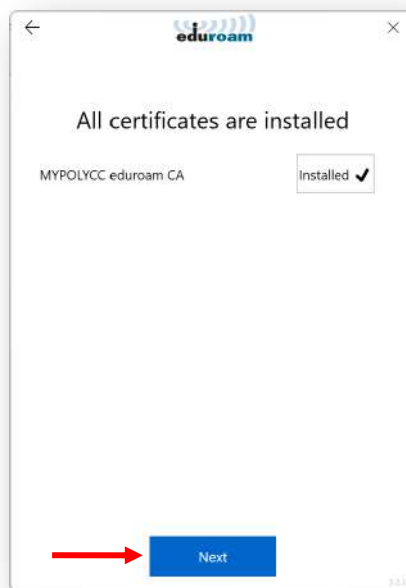
11. In the geteduroam app, click “Approve” to use your account to connect to eduroam on your device.



- Click “Install” to install the eduroam certificate. Then, click “Yes” in the Security Warning Window.



- Click “Next” after all certificates are installed.



14. You will see the following page upon a successful connection to eduroam.

